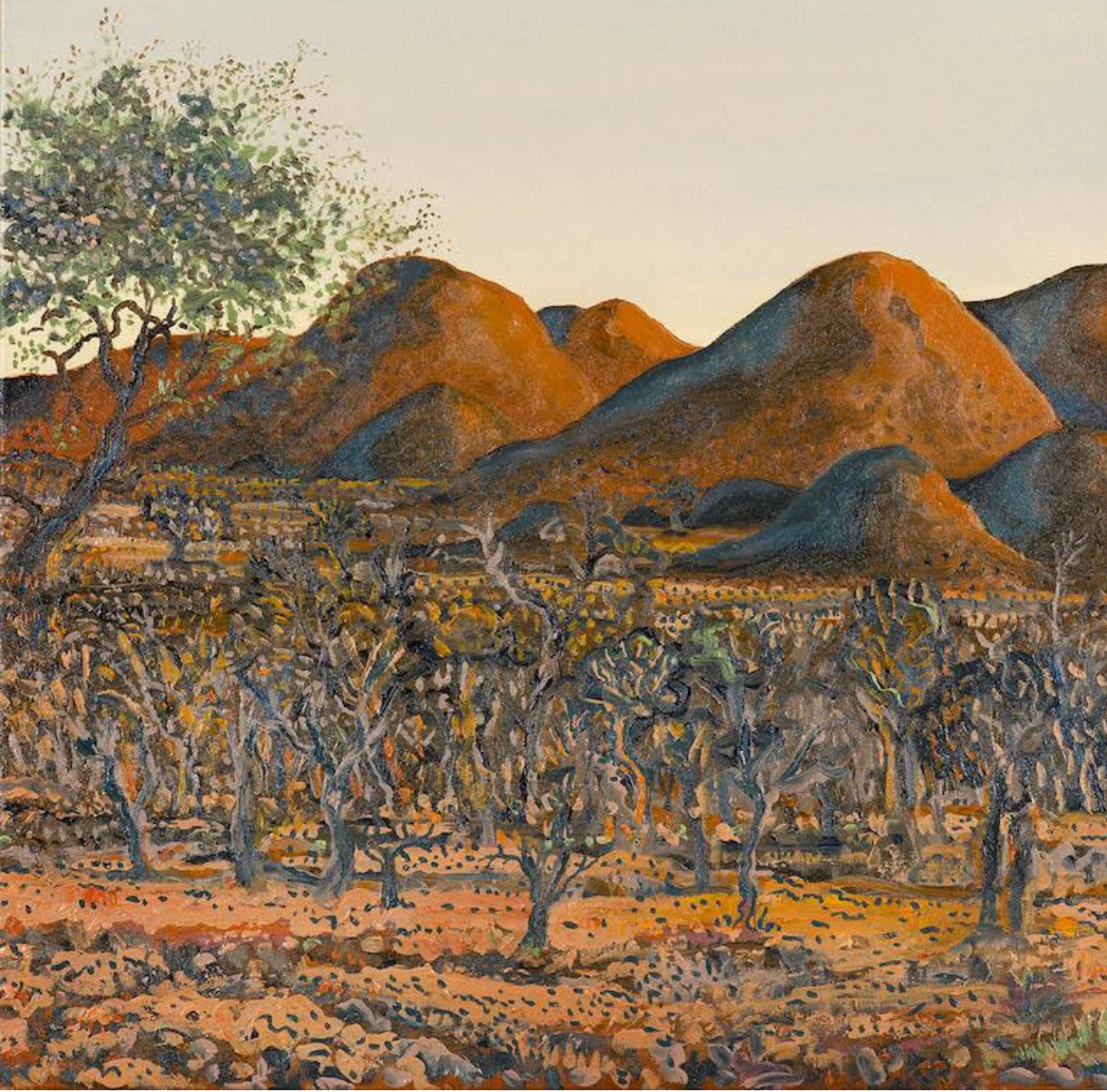


EVERARD READ



THE CLARITY OF WILDERNESS – TSWALU
PAINTINGS BY BRUCE BACKHOUSE

A digital exhibition in collaboration with Everard Read and the
Tswalu Foundation AiR Program

8 June – 8 July 2020



TSWALU
FOUNDATION

EVERARD READ

Kalahari Reserve is a magical place with its ancient landscapes characterized by the magnificent Korannaberg mountains and rolling dunes. The clear night skies, pristine landscapes, and desert-adapted fauna and flora all combine to make Tswalu a spiritual experience that only the unique Kalahari can create. The vast areas of red sand, shrubs and tall trees are home to an amazing variety of wildlife, specially adapted to survive in harsh, dry conditions. The property significantly contributes to conservation of species and ecosystems in the Northern Cape, including numerous rare and endangered species.

The reserve has a strong community and conservation ethic, with numerous research projects that have been sanctioned by the Oppenheimer family. The Tswalu Foundation was created in 2008 to develop a platform upon which local and international visitors could contribute and become involved in community work and environmental research on the reserve. The Foundation has been fundamental in developing a greater appreciation for the beauty of the Kalahari and its diverse and abundant wildlife. Although Tswalu Kalahari and the Oppenheimer family support numerous research projects, the Foundation ensures that more researchers are afforded the opportunity to study this unique land.

One of the programs managed through the Tswalu Foundation is the Artists in Residence Program (AiR), which was initiated in 2015 with the idea of further supporting research on Tswalu through the generation of income for research as well as providing artists an opportunity to be inspired by Tswalu. The selection of the artists to join the Tswalu Foundation AiR program is guided by Mark Read and his incredible team at the Everard Read gallery in Johannesburg. Together we are showcasing the depth and talent of South African artists as well as uncovering new artistic talent. The importance of

artists portraying and depicting this vulnerable landscape should not be underestimated. Art portrays the natural world in varying forms, from the intimate to the majestic, and evokes the mood and feeling of a place. The beauty, magnificence and, in some cases, hardships of an area are clearly reflected through art.

We are delighted to have partnered with Bruce Backhouse, who's stunning landscape pieces are iconic. It is impossible not to marvel at the detail and sense of place in this extraordinary collection of exquisite paintings. These are masterpieces, highlighting not only the miracles of this environment but also its complexities and sheer magnitude. Bruce's work extended through the dry season into the rains to enable him to portray the changing of the Kalahari seasons. His sensual and atmospheric landscapes capture the essence of the Tswalu landscape beautifully.

AiR is important to the family as it broadens the depth and scope of the foundation beyond pure science and adds hugely to the long-term sustainability of the foundation.

- Nicky Oppenheimer

For more information please contact:

Stephanie Le Roy Stephanie@everard.co.za / +27 79 862 0107

Mark Read Mark@everard.co.za / +27 83 441 8064

***all prices include South African VAT of 15% and are unframed**

EVERARD READ



The private challenge to myself was to compress 114 000 hectares of unspoiled semi-desert, into a number of canvases and works on paper, each one being approximately a metre square. Capturing the atmosphere of the diversity of Tswalu was, I think, my goal. – Bruce Backhouse (2019)

Bruce Backhouse

From the Chain Road, Tswalu

2019

70 x 70cm

Oil on canvas

R48 000



BACKHOUSE
2019

EVERARD READ



Bruce Backhouse
Across the Dunes from Tower Mountain,
Tswalu
2020
110 x 140cm
Oil on canvas

R115 000

EVERARD READ



All artists thrive on big chunks of uninterrupted time. Tswalu provides this perfectly. Concentration is effortless. – Bruce Backhouse (2019)

Bruce Backhouse
Near Dedebe Pan, Tswalu
2019
70 x 70cm
Oil on canvas

R48 000

EVERARD READ



Bruce Backhouse
Korrannaberg Layers, Tswalu
2019
110x110cm
Oil on canvas

R95 000

EVERARD READ



Bruce Backhouse

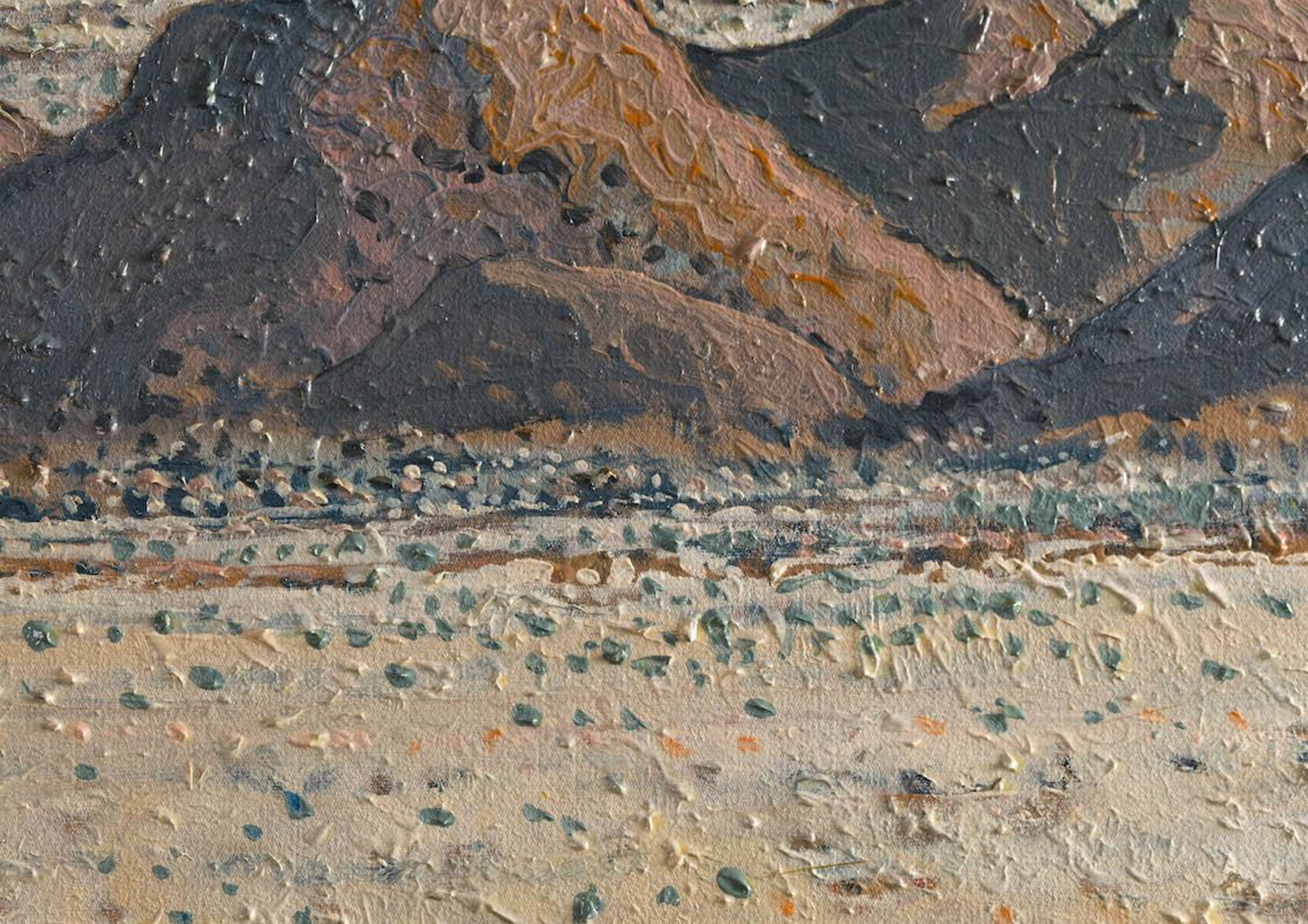
Wide Korrannaberg Landscape, Tswalu

2019

50 x 150cm

Oil on canvas

R78 000



EVERARD READ



Bruce Backhouse

Sandstorm, Tswalu

2019

70 x 70cm

Oil on canvas

R48 000

EVERARD READ

Not only is the geographical environment ideal, but the studio makes for a working space that very quickly, becomes your own. I have never in my career been as productive, without trying too hard. The time frame of three months suited me perfectly. – Bruce Backhouse (2019)



EVERARD READ



Bruce Backhouse
Kameeldoring and
Korrannaberg, Tswalu
2019
90 x 130cm
Oil on canvas

R95 000

EVERARD READ



Bruce Backhouse
From Tower Mountain with Distant
Korannaberg, Tswalu
2020
110 x 140cm
Oil on canvas

R115 000



EVERARD READ



Bruce Backhouse

Tswalu Sun

2019

70 x 70cm

Oil on canvas

R48 000

EVERARD READ



Bruce Backhouse
Korrannaberg in Shadow, Tswalu
2019
70 x 70cm
Oil on canvas

R48 000

EVERARD READ



Bruce Backhouse

The Dunes, Tswalu

2019

70 x 70cm

Oil on canvas

R48 000



My methodology was to ride my bike or walk at first light, and at the end of each day. I'd carry a sketchbook for referencing. I'd then spend the day painting from memory, in the wonderfully private Tswalu studio. – Bruce Backhouse (2019)

EVERARD READ



Bruce Backhouse

Dunes without Boundaries, Tswalu

2019

90 x 130cm

Oil on canvas

R95 000

EVERARD READ



Bruce Backhouse
Early Morning
Korrannaberg, Tswalu
2019
110 x 150cm
Oil on canvas

R115 000

EVERARD READ



Bruce Backhouse
Korrannaberg at Sunset, Tswalu
2019
90 x 130cm
Oil on canvas

R95 000



EVERARD READ



Bruce Backhouse
Korrannaberg Vista, Tswalu
2019
90 x 130cm
Oil on canvas

R95 000

EVERARD READ



Bruce Backhouse
Dunes Beyond the
Horizon, Tswalu
2019
110 x 150cm
Oil on Canvas

R115 000



EVERARD READ



Bruce Backhouse
Faraway Korrannaberg with
District Road, Tswalu
2019
110x150cm
Oil on canvas

R115 000

EVERARD READ



Bruce Backhouse
The Dunes with Distant Mountains, Tswalu
2019
70 x 70cm
Oil on canvas

R48 000

EVERARD READ



I have always been drawn to that point where the sky touches the land, ie the horizon, and how to interpret that onto paper or canvas. The Tswalu landscapes are highly complex, unique and varied. – Bruce Backhouse (2019)

Bruce Backhouse

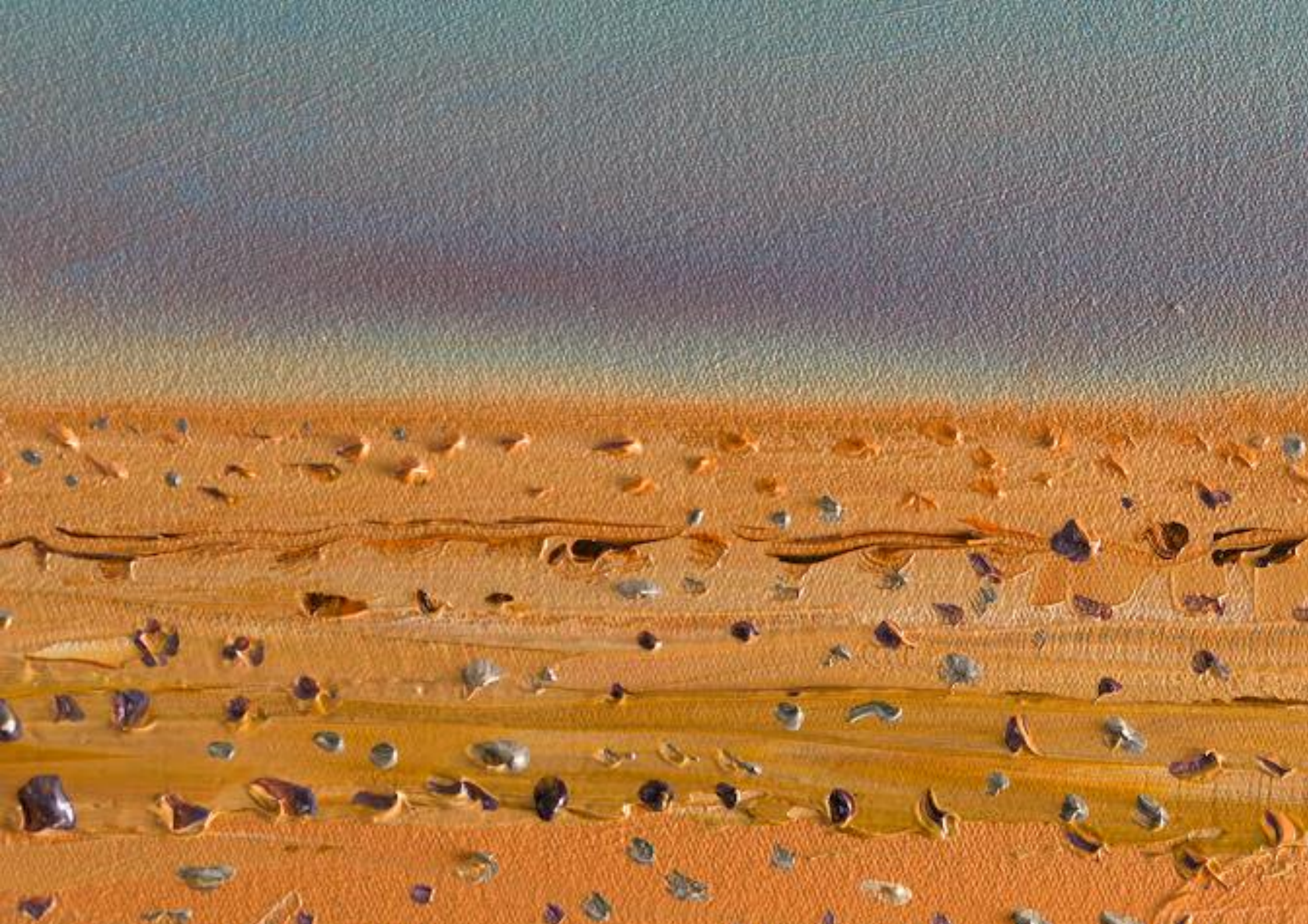
Towards the Dunes, with Distant Rain, Tswalu

2020

60 x 60cm

Oil on canvas

R35 000



EVERARD READ



Bruce Backhouse
Tswalu in Black & White
2019
70 x 70cm
Oil on canvas

R48 000

EVERARD READ



Bruce Backhouse
Red Korrannaberg, Tswalu
2019
70 x 70cm
Oil on canvas

R48 000

EVERARD READ



Bruce Backhouse
Faraway Mountains, across the
Dunes, Tswalu
2019
90 x 130cm
Oil on canvas

R95 000



EVERARD READ



Bruce Backhouse
From above Dedebeben Pan
looking East, Tswalu
2019
90 x 130cm
Oil on canvas

R95 000



EVERARD READ



Bruce Backhouse

The Dunes from Tower Mountain, Tswalu

2019

70 x 70cm

Oil on canvas

R48 000

EVERARD READ



Bruce Backhouse

Soft Korannaberg, with District Road, Tswalu

2020

60 x 120cm

Oil on canvas

R62 000

EVERARD READ



Then there are the colours. The Tswalu sand/earth is impossible to capture. Depending on the light, one minute it's burnt sienna, then ... there are the seasons. – Bruce Backhouse (2019)

Bruce Backhouse

Orange Sky over Dunes, Tswalu

2020

51 x 51cm

Oil on canvas

R30 000

EVERARD READ



Bruce Backhouse
Three Koppies and The Dunes,
Tswalu
2020
51 x 51cm
Oil on canvas

R30 000

EVERARD READ



Bruce Backhouse
Distant Dunes, Tswalu
2019
110x150cm
Oil on canvas

R115 000

EVERARD READ



Bruce Backhouse

Road through the Dunes, Tswalu

2020

75 x 100cm

Oil on canvas

R66 000

EVERARD READ



As elusive as I've found Tswalu, I have found it as stimulating. I was fortunate enough to get two bites of Tswalu: before and after the rains. Hopefully the sensual and atmospheric landscapes are captured on my large-scale canvasses and works on paper. – Bruce Backhouse (2019)

EVERARD READ

BRUCE BACKHOUSE (b. 1950, Pietermaritzburg, South Africa)

EDUCATION AND TRAINING

- 1970-1971 Studied fine art at Rhodes University for 2 years under Brian Bradshaw.
Gained work experience as an Art Director and Creative Director at various advertising agencies in South Africa for 25 years.
Illustrated ad campaigns, magazine covers and newspaper articles during this period.
- 1997-2004 MD Image Bank South Africa
- 2004 Became a full-time artist

SOLO AND GROUP EXHIBITIONS

- 2020 *The Clarity of Wilderness – Tswalu*, Everard Read Johannesburg & Tswalu
- 2018 *Print-making with Mark Attwood*, Artist's Press
- 2014 *Karoo Preserved*, solo exhibition, Everard Read Johannesburg
- 2013 *100, Everard Read Group Centenary Exhibition*, Johannesburg

Vignette, Carol Lee, Johannesburg

Summer Exhibition, Elizabeth Gordon Gallery, Durban

2012 *Summer Exhibition*, Elizabeth Gordon Gallery, Durban

2011 *Durban – A City for all Seasons*, Elizabeth Gordon Gallery, Durban

2010 *A view from the South*, Everard Read, Johannesburg

Solo exhibition, Obert Contemporary, Melrose Arch, Johannesburg

Summer Exhibition, Gallery 88, Paarl

2009 Solo exhibition Watercolour Monotypes & Etchings, David Krut Gallery

2008 Exhibition at Grande Provence Gallery, Franschoek

Exhibition at Upper deck Gallery, Plettenberg Bay

2007 Launch Solo show of David Krut's new space, Johannesburg.

Exhibition at UNISA gallery, "David Krut Prints".

2005 Exhibition at Everard Read Johannesburg

1982 Solo exhibition at Ronnie van der Walt Gallery, Melville.

1980 Solo exhibition at The Market Theatre Gallery.

ART FAIR'S

2015 – 2018 Turbine Art Fair, Carol Lee, Johannesburg

2015 Venice Biennale, Benetton Project Artist

EVERARD READ

2013 Sydney Contemporary, Everard Read Johannesburg

2008 – 2012 Johannesburg Art Fair, Everard Read, Johannesburg

RESIDENCY PROGRAMS

2019 Tswalu Oppenheimer Kalahari Reserve, three-month artist residency

COLLECTIONS AND COMMISSIONS

FNB

First Rand

Rand Merchant Bank

Wanderers Stadium

Standard Bank Collection

UNISA

The Weekender

Business Day

ArtBank

Renasa Insurance

Black & white internal mural, private residence, Llandudno, Cape Town

Private collections in South Africa, United Kingdom, Europe, Australia and USA